



Waterfront Park

Site Inventory & Analysis





SITE LEGEND:

- 1 Basketball Courts
- 2 Pickleball Courts
- 3 Multipurpose Field
- 4 Concessions & Restrooms
- 5 Shade Shelter
- 6 Parking (On Street Parallel)
- 7 Court Street (one-way) with Bike Lane
- 8 Passive Park
- 9 On Street Parking
- 10 Traffic Calming
- 11 Playground Equipment
- Pathway Lighting
- ⦿ Field Lighting
- Scoreboard
- ▽ Security Camera

Waterfront Park

Schematic Design



SWBR

DRAWING LIST - WATERFRONT PARK

General	
G-001	General Notes, Legends & Drawing List
Landscape	
L-000	Existing Conditions/ Survey
L-001	Existing Conditions/ Survey
L-002	Existing Conditions/ Survey
L-003	Existing Conditions/ Survey
L-004	Demolition Plan
L-101	Site Layout (West) Plan
L-102	Site Layout (East) Plan
Civil	
C-101	Grading, Drainage & Utility (West) Plan
C-102	Grading, Drainage & Utility (East) Plan
Electrical	
E-101	Electrical Site Plan

Drawing symbols

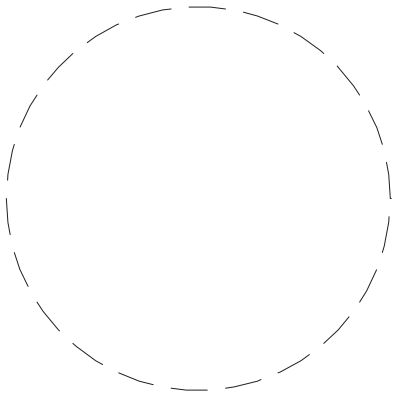
View title 	Exterior elevation Elevation no. Drawing no.	Door numbers
Building / wall section cut Detail no. Drawing no. Viewing direction	Interior elevations Elevation no. Drawing no. 1 2 3 4	Window type Room number Revision Partition type OR Plan key note Demolition key note Ceiling type and height
Detail section cut Detail no. DRAWING NO. Viewing direction	Structural grid 	
Detail - blow up Detail no. Drawing no.	Accessibility V/HAU Visual / hearing accommodation unit Accessible unit	

Material symbols

	Undisturbed earth		Steel - large scale (Other metals as noted)		Batt insulation
	Gravel or crushed stone		Steel - small scale (Other metals as noted)		Rigid insulation
	Stone		Wood framing (continuous)		Wood blocking (intermittent)
	Concrete		Finish wood		
	Concrete masonry unit		Plywood		
	Brick		Gypsum, sand, mortar		

Architectural / Structural abbreviations

AB Anchor bolt ACC Accessible ACCU Air cooled condensing unit ACI American Concrete Institute ACT Acoustical ceiling tile ACM Asbestos containing material ACOUS PNL Acoustical panel ACS PNL Access panel ADDL Additional ADJ Adjustable, adjacent ADH Adhesive AFF Above finished floor AGGR Aggregate AHU Air handling unit AISC American Institute of Steel Construction AIS American Iron and Steel Institute ALT Alternate ALUM Aluminum ANDD Anodized APPROX Approximate ARCH Architectural ARD Auxiliary roof drain ASD Allowable stress design ASTM American Society for Testing and Materials AWP Acoustical wall panel AWS American Welding Society BAT Batton BB Back to back BD Base board BCNYS Building Code of New York State BTUM Bituminous BD Board BLDG Building BLKG Blocking BM Beam, Benchmark BOT Bottom BR Bedroom BRG Bearing BRZ Bronze BSMT Basement BTWN Between BUR Built up roofing BW Both ways CCTV Closed circuit television CAB Cabinet CB Catch basin, Corner bead CH BD Chalkboard CEM Cement CF Contractor furnished CFMF Cold-formed metal framing CFUJ Contractor furnished/ Contractor installed CFUJ Contractor furnished/ Owner installed CG Corner guard CH Chalkboard CI Cast iron CIP Cast in place, Cast iron pipe CJ Control joint CL Centerline CLO Cloiling CLO Closet CLR Clear, Color CMT Ceramic mosaic tile CMU Concrete masonry unit CNTR Counter COL Column CONC Concrete CONF Conference CONN Connection CONSTR Construction CONT Continuous CONTR Contractor COORD Coordinate CPT Carpet CSJ Construction joint CSK Counter sunk CT Ceramic tile, Count, Current transformer CTR Central CW Cold water piping, Casement window CU Cubic CUH Cabinet unit heater CUYD Cubic yard D Deep, Depth D Perry (rail) db Bar diameter DBL Double DEFS Direct-applied exterior finish system DEG Degree DEMO Demolition DEPT Department DET Detail DF Drinking fountain DIA OR a Diameter DIAG Diagram, Diagram DIFF Diffuser DIR Direction DISP Dispenser DIV Division DMFF Deep proofing DL Dead load DN Down DO Ditch DR Door, Drive DS Downspout DW Dishwasher	DWV Drainage waste & vent DWG Drawing DNL Dowel E East EA Existing Building Code of New York State EBCNYS Existing Building Code of New York State EC Electrical contractor EF Each floor EIFS Exterior insulation and finish system EP Expansion joint ELAS Elastomeric ELC Elevation ELEC Electrical ELEV Elevator EM Empty mat, Expanded metal EMER Emergency ENCL Enclosure ENGR Engineer EOS Edge of slab EPF Electric panel EQ Equal EQUIP Equipment ES Emergency shower ETR El coteria EW Existing to remain EW Each way EWC Electric water cooler EWT Existing EXC Excavation, Excavate EXP Expand, Expansion EXT Exterior, External, Extinguisher FAC Face to face FAAP Fire alarm annunciator panel FACP Fire alarm control panel FD Floor drain FDTN Foundation FE Fire extinguisher FEC Fire extinguisher cabinet FHC Fire hose cabinet FIN Finished FIXT Fixture FLASH FLASH FLEX Flexible FLOUR Fluorescent FNG Floor, Range F/O Out to out FPA Fire protection, Fireproof FRTW Fire retardant treated wood FT Foot, Feet FTG Footing FTR Finned tube radiation FURN Furniture, Furnish FUT Future FWC Fabric wall covering GA Gage GAL Gallon GIP Galvanized GB Grab bar GC General contract(or) GFR Glass fiber reinforced concrete GFRG Glass fiber reinforced gypsum GL Glass, Ground level GL BLK Glass block GLU LAM Glue laminated beam GR Grate, Gross GWT Glazed wall tile GYM Gypsum GYP BD Gypsum board GYP PLAS Gypsum plaster HS Hose bibb HC Hollow core, Hose cabinet HCP Handicapped HDW Hardware HDWD Hardwood HPT Hollow metal HO Hold open HOL Horizontal HP High point, Horsepower HR Hour HSS Hollow structural section HT Height HTG Heating HTR Heater HVAC Heating, ventilating and air conditioning HV Hot water HYD Hydrant ID Inside diameter IN Inches INCL Included INCND Incandescent INFO Information INSUL Insulation INTERM Intermediate INT Interior JAN Janitor JST Joist KIP 1000 Pounds KO Knockout KPL Kick plate KREF Liner, Angle LAM Laminate(d) LAU Laundry LAV Lavatory LB Pound LBL Label LD Load LF Linear feet (foot)	LH Left hand, Latent heat LN Linear LKR Locker LL Live load LLH Long leg horizontal LLV Long leg vertical LOC Location LRF Load & resistance factor design LT Light LTC Lighting LWC Lightweight concrete MACH Machine MCH Machine MNT Maintenance MAS Masonry MIS Miscellaneous MAX Maximum MC Mechanical contractor MCS Metal corner bead MDO Medium density overlay MDF Medium density fiberboard MECH Mechanical MEZ Mezzanine MFR Manufacturer MH Manhole MM Millimeter MFRF Macintosh/resistant fire-resistive coating MIN Minimum MISC Miscellaneous MILK Milkwork MO Masonry opening MR BD Marker board MTD Mounted MTL Metal MUL Multion N North NAT Natural NCOMBL Noncombustible NIC Not in contract NO OR # Number NOM Nominal NRC Noise reduction coefficient NTS Not to scale NWC Normal weight concrete O/O Out to out OA Overall, Outside air OC On center OD Outside diameter OFU Owner furnished, Contractor installed OFUJ Owner furnished, Owner installed OFUJ Overflow drain OFF Office OH Opposite hand OH DR Overhead (colling) door OPNG Opening OP Galvanized OPT Optional, Optimum OZ Ounce PA Public address PBD Particleboard PC Plumbing contractor, Portland cement PCC Precast concrete PCT Porcelain ceramic tile PED Pedestal PEND Pendant PER Period PERF Perforated PGBD Peg board PL Undergruond PL Plate, Property line PLF Pounds per linear foot PLAM Plastic laminate PLAS Plaster UNEX Unexcavated UNFIN Unfinished UNON Unless otherwise noted UTIL Utility UNV Unit ventilator VARN Varnish(ad) VB Vinyl base VCT Vinyl composition tile VENT Ventilation VERT Vertical VEST Vestibule VF Verify in field VIN Vinyl VOL Volume VR Vapor retarder VT Vinyl tile V SHT Vinyl sheet VW Vinyl wall covering WCC West W W/tilt WC Water closet, Wall covering WIO Without WD Wood WDW Window WF Wide flange WD GD Wood guard WH Water heater WI Wrought iron WM Wire mesh WP Waterproofing, Working point WR Water repellent, weather resistant W RECP Waste receptacle WSCPT Wainscot WT Weight, Watertight, Water table WVF Welded wire fabric X By YD Yard
---	---	---



Drawn By: JMB
Checked By: JMB
Project Manager: BP

These documents and all the ideas, arrangements, designs and plans indicated thereon or presented thereby are owned by and remain the property of SWBR and no part thereof shall be utilized by any person, firm, or corporation for any purpose whatsoever except with the specific written permission of SWBR. All rights reserved. ©

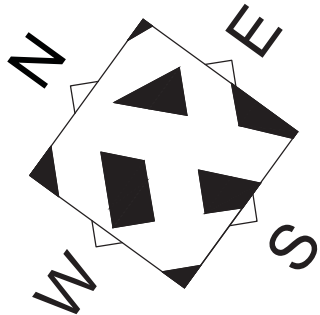
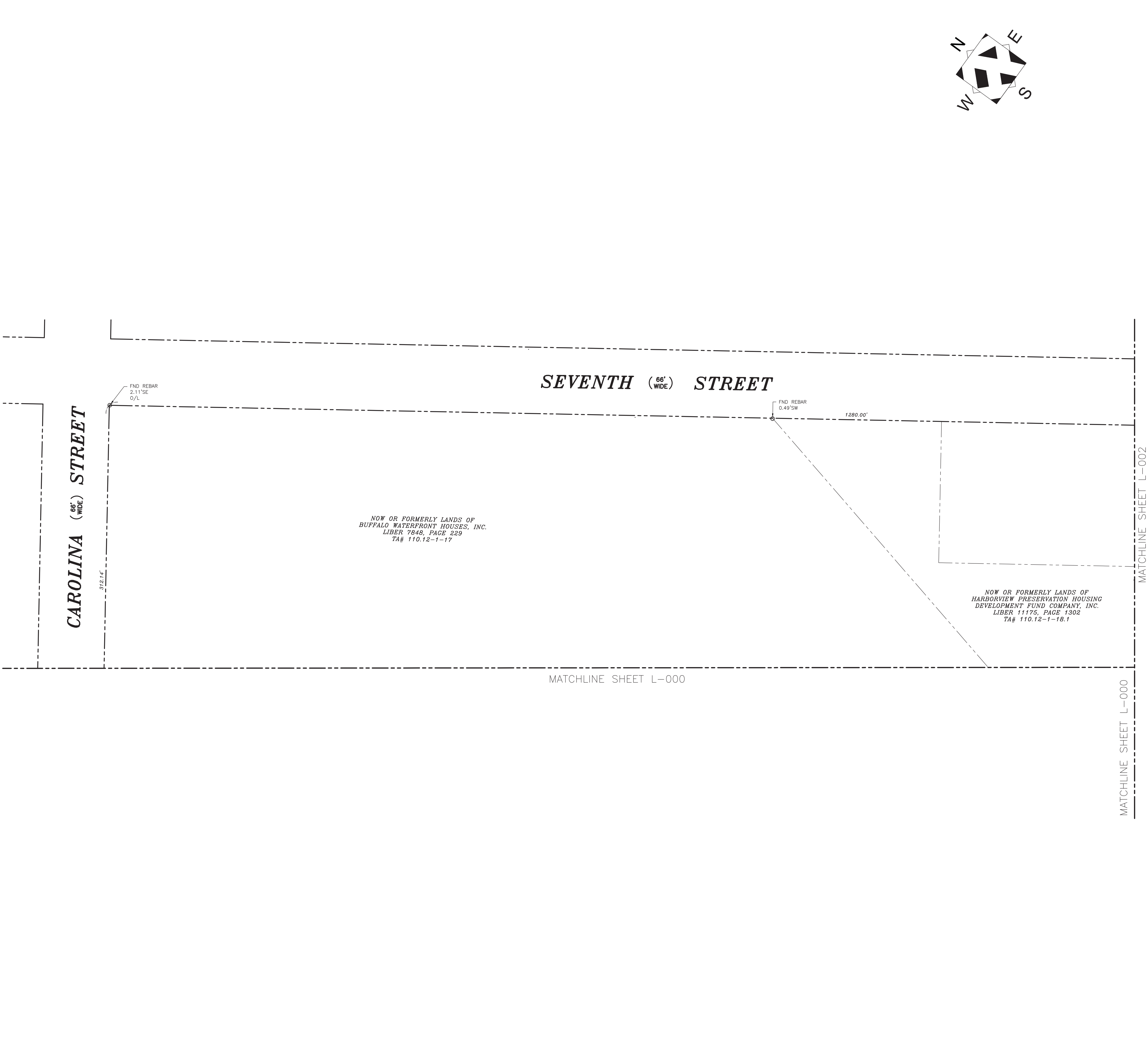
Revisions

City of Buffalo Parks & Buffalo
Public School Facilities Survey &
Design Development
SWBR Project Number 18630.00

Community Foundation for
Greater Buffalo
726 Exchange Street, Suite 525
Buffalo, NY 14210

G-001
Waterfront
General Notes,
Legends & Drawing
List

03.29.2019
Design Development Set



VICINITY MAP:

NOT TO SCALE

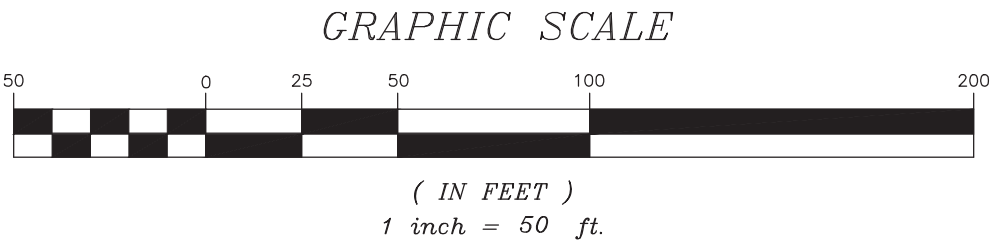
LEGEND

EDGE OF PAVEMENT	POOL	PILE
GUARDRAIL	BUILDING UC	GOLF FAIRWAY
TREELINE	FOUNDATION	UNDER CONSTRUCTION
FENCE_GATE	RUINS	RUNWAY
RIVER	MARSH OUTLINE	AIRFIELD PAVED
HEDGE	POND, LAKE	AIRFIELD SHLDR
DIRTROAD	PAVED GUTTER	AIRFIELD PAINT
BUILDING (RES.)	HEADWALL	HELICOPTER PAD
MISCLINE	DAM	ABANDONED RR
RETAINING WALL	PIPE END	PAVED PARKING
CURB	CEMETERY	UNPAVED PARKING
INDEX	RECREATION UNPAV	AERIAL TC BOX
INTER	TANK	PIPE
INDEXD	RECREATION PAVED	AIR VENT
INTERD	TRAIL	HEAT PUMP / AC
SIDEWALK	BUILDING (MISC)	VALVE
DECK	CREEK	LANDSCAPE
STEPS	SOFTBREAK	END EXP JOINT
GRID (w/text)	HARDBREAK	ROAD CENTERLINE
RR	OBSCURED_AREA	UTILITY_BOX
SIGN/OH SIGN	UNPAVED SHOULDER	GREENS
ROAD PAINT	BUILDINGS (TEMP)	TRAPS_BUNKERS
PKG PAINT	CANOPY	TEES
TRAVELWAY	FENCE_GATE	INDEFINITE_AREA
PAVED DRIVE	PHONE	CULTIVATED FIELD
UNPAVED DRIVE	GUY	DOCK
BRUSH	RAMP	BRIDGE ROAD
CONTEXT	SMOKE	BRIDGE CURB
BRIDGE	OH PIPE	BRIDGE SIDEWALK
MAPPING LIMITS	OH WALK	MID EXP JOINT
SLAB_CONCRETE	CONVEYOR	BRIDGE-BREAK
WALL	LANDFILL	OBSCURED_BREAK
	OPEN STORAGE	

SYMBOLS

□ CB	ROUND	□ CB	HANDI-CAP
□ SQUARE	PWRPOLE	• VALVE	
◇ DI	FIREHYD	• FLAG	
◇ DECIDUOUS BUSH	SWAMP	■ UNOB	
* CONIFEROUS BUSH	PWRPOLE	□ RAILSIG	
x TC	⊠ TOWER (LINE)	△ RAILSW	
• MH	(CULV (LINE)	□ TRABOX	
• LAMPOST	† CEMETERY	• RUNLIGHT	
• DECIDUOUS TREE	• AC or HEAT PUMP	• TAXLIGHT	
* CONIFEROUS TREE	• POLES (MISC)	• TRASIG	
• SIGN	x DTM SPOT	• TREEBOLE	
• POST	x OBS DTM SPOT	• MB	
• SAT.DISH	• ANTENNA	• VERT	
x SPOT	• SAT.DISH	• HOR	
	— GUY (LINE)	• HV	

NOTE: SEE SHEET L-003 FOR SURVEY NOTES



SWBR

387 East Main Street Rochester NY 14604
585 232 8300 | rochester@swbr.com

FoitAlbert
ASSOCIATES
Architecture, Engineering, Surveying, Environmental,
245 Main Street, Suite 200
Buffalo, NY 14203
P (716) 856-9551
www.foit-albert.com



Drawn By: SS
Checked By: MP
Project Manager: M. POHL

These documents and all the ideas, arrangements, designs and plans indicated thereon or presented thereby are owned by and remain the property of SWBR and no part thereof shall be utilized by any person, firm, or corporation for any purpose whatsoever except with the specific written permission of SWBR. All rights reserved. ©

Revisions

**City of Buffalo Parks & Buffalo
Public School Facilities Survey &
Design Development**
SWBR Project Number 18630.00

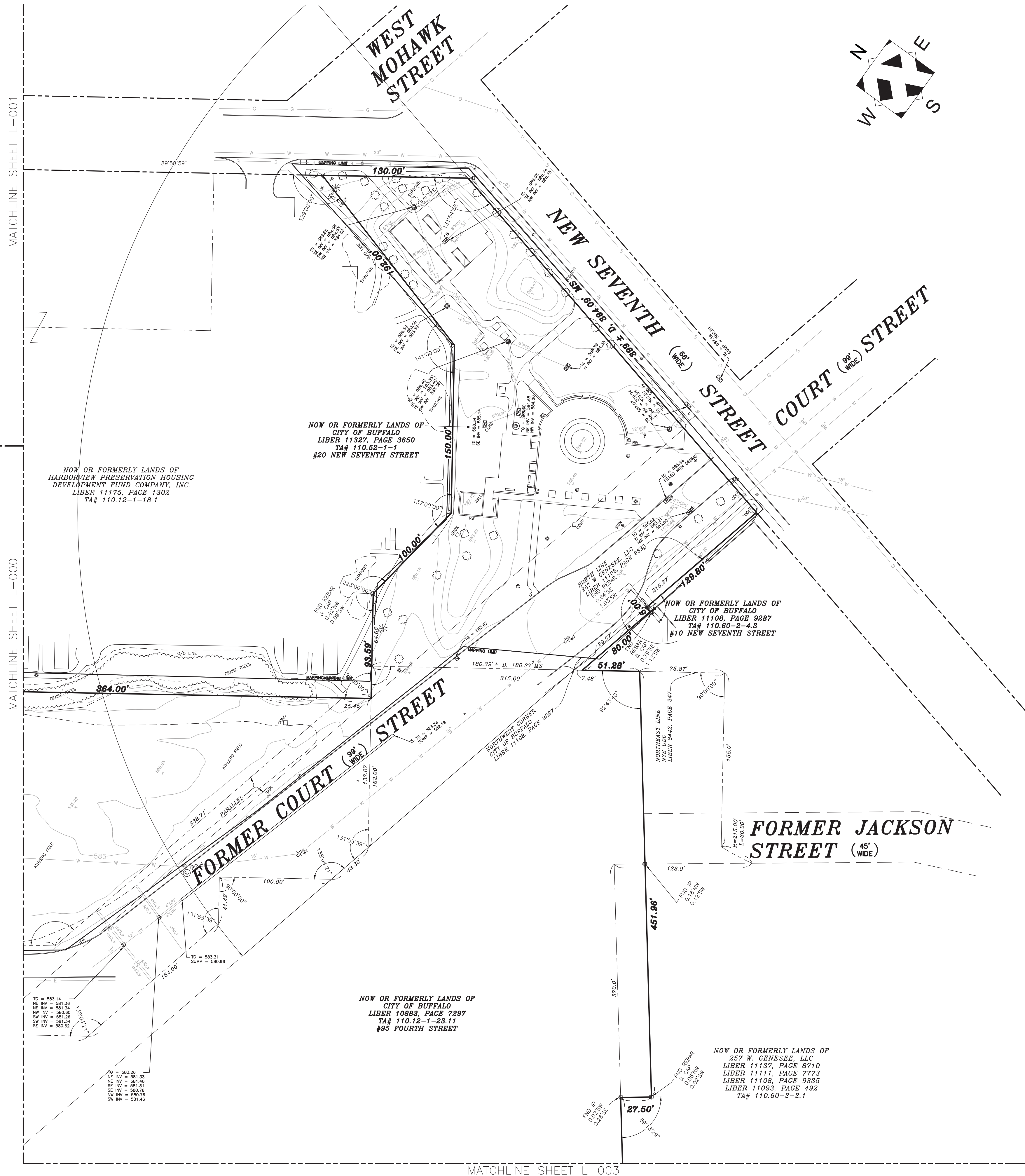
**Community Foundation for
Greater Buffalo**
726 Exchange Street, Suite 525
Buffalo, NY 14210

L-001

Waterfront

Existing
Conditions/Survey (East)

03.29.2019
Design Development Set



VICINITY MAP:

NOT TO SCALE

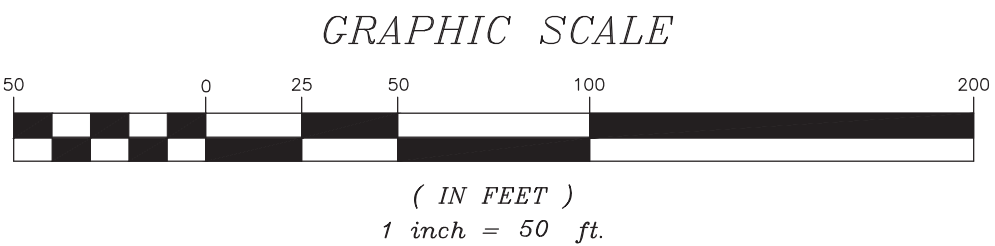
LEGEND

EDGE OF PAVEMENT	POOL	FILE
GUARDRAIL	BUILDING UC	GOLF FAIRWAY
TRAFFIC	FOUNDATION	UNDER CONSTRUCTION
FENCE GATE	RUINS	RUNWAY
RIVER	MARSH OUTLINE	AIRFIELD PAVED
HEDGE	POND, LAKE	AIRFIELD SHLDR
DIRTROAD	PAVED GUTTER	AIRFIELD PAINT
BUILDING (RES.)	HEADWALL	HELICOPTER PAD
MISCLINE	DAM	ABANDONED RR
RETAINING WALL	PIPE END	PAVED PARKING
CURB	CEMETERY	UNPAVED PARKING
INDEX OBS INDEX	RECREATION UNPAV	AERIAL TC BOX
INTER OBS INTER	TANK	PIPE
INDEXD OBS INDEXD	RECREATION PAVED	AIR VENT
INTERD OBS INTERD	TRAIL	HEAT PUMP / AC
SIDEWALK	BUILDING (MISC)	VALVE
DECK	CREEK	LANDSCAPE
STEPS	SOFTBREAK	END EXP JOINT
GRID (w/text)	HARDBREAK	ROAD CENTERLINE
RR	OBSCURED AREA	UTILITY BOX
	UNPAVED SHOULDER	GREENS
	BUILDINGS (TEMP)	TRAPS BUNKERS
SIGN/OH SIGN	CANOPY	TEES
ROAD PAINT	FENCE GATE	INDEFINITE AREA
PKG PAINT	PHONE	CULTIVATED FIELD
TRAVELWAY	GUY	DOCK
PAVED DRIVE	RAMP	BRIDGE ROAD
UNPAVED DRIVE	SMOKE	BRIDGE CURB
BRUSH	OH PIPE	BRIDGE SIDEWALK
CONTEXT	OH WALK	MID EXP JOINT
BRIDGE	CONVEYOR	BRIDGE-BREAK
MAPPING LIMITS	LANDFILL	OBSCURED BREAK
SLAB, CONCRETE	OPEN STORAGE	
WALL		

SYMBOLS

ROUND		SYMBOLS		HANDI-CAP	
○ CB	○ CB	⊖	PWRPOLE	●	VALVE
□ SQUARE	CB	⊖	FIREHYD	●	FLAG
◇ DI		⊖	SWAMP	●	UNOB
☆ DECIDUOUS BUSH		⊖	PWRPOLEL	⊖	RAILSIG
* CONIFEROUS BUSH		⊖	TOWER (LINE)	△	RAILSW
× TC		⊖	CULV (LINE)	□	TRABOX
● MH		⊖	CEMETERY	●	UNLIGHT
● LAMPOST		⊖	AC OR HEAT PUMP	●	TAXLIGHT
● DECIDUOUS TREE		⊖	POLES (MISC)	●	TRASIG
* CONIFEROUS TREE		×	DTM SPOT	●	TREEBOLE
⋈ SIGN		×	OBST DTM SPOT	●	MB
● POST		×	ANTENNA	●	VERT
0.0		—	SAT.DISH	●	HOR
× SPOT		—	GUY (LINE)	▲	HV

NOTE: SEE SHEET L-003 FOR SURVEY NOTES

**SWBR**

387 East Main Street Rochester NY 1460
585 232 8300 | rochester@swbr.com

FoitAlbert
ASSOCIATES
Architecture. Engineering. Surveying. Environmental.
265 Main Street, Suite 200
Buffalo, NY 14203 P (716) 856-1955 www.foit-albert.com



Drawn By:	SS
Checked By:	MF
Project Manager:	M.

These documents and all the ideas, arrangements, designs and plans indicated thereon or presented thereby are owned by and remain the property of SWBR and no part thereof shall be utilized by any person, firm, or corporation for any purpose whatsoever except with the specific written permission of SWBR. All rights reserved. ©

Revisions

City of Buffalo Parks & Buffalo
Public School Facilities Survey &
Design Development
SWBR Project Number 18630.00

**Community Foundation for
Greater Buffalo**
726 Exchange Street, Suite 525
Buffalo, NY 14210

L-002

Waterfront

Existing
Conditions/Survey (East)

03.29.2019
Design Development Set

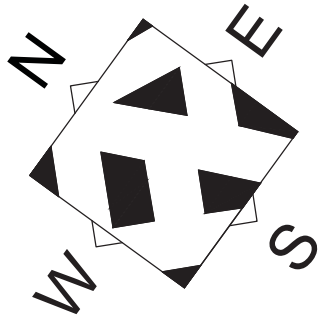
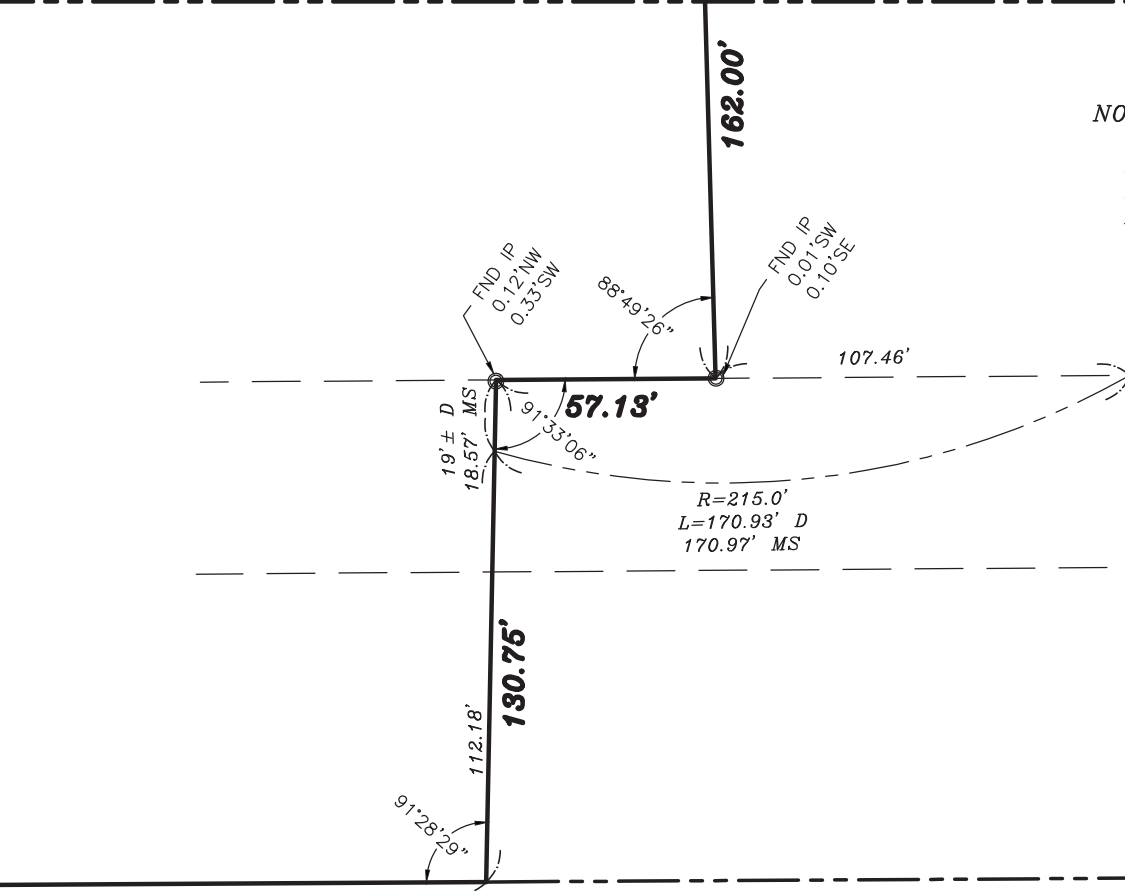
MATCHLINE SHEET L-000

MATCHLINE SHEET L-002

NOW OR FORMERLY LANDS OF
CITY OF BUFFALO
LIBER 10883, PAGE 7297
TA# 110.12-1-23.11
#55 FOURTH STREET

NOW OR FORMERLY LANDS OF
257 W. GENESEE, LLC
LIBER 11137, PAGE 8710
LIBER 11111, PAGE 7773
LIBER 11108, PAGE 9335
LIBER 11093, PAGE 492
TA# 110.60-2-2.1

**FORMER FOURTH
STREET (50' WIDE)**



NOTES:

MAPPING COMPILED BY PHOTOGRAMMETRIC METHODS FROM AERIAL PHOTOGRAPHY FLOWN DECEMBER 2018

THIS SURVEY WAS PREPARED WITHOUT THE BENEFIT OF AN ABSTRACT OF TITLE AND IS SUBJECT TO ANY STATE OF FACTS THAT MAY BE REVEALED BY AN EXAMINATION OF SUCH.

COORDINATES ARE REFERENCED TO THE NEW YORK STATE PLANE COORDINATE SYSTEM WEST ZONE, NAD 83.

ELEVATIONS ARE REFERENCED TO THE NAVD 88 VERTICAL DATUM.

UNAUTHORIZED ALTERATION OR ADDITION TO ANY SURVEY, DRAWING, DESIGN, SPECIFICATION, PLAN OR REPORT IS A VIOLATION OF SECTION 7209, PROVISION 2 OF THE NEW YORK STATE EDUCATION LAW. ONLY COPIES FROM THE ORIGINAL OF THIS SURVEY MAP MARKED WITH AN ORIGINAL OF THE LAND SURVEYOR'S EMBOSSED SEAL AND SIGNATURE SHALL BE CONSIDERED TO BE VALID TRUE COPIES.

ALL UNDERGROUND UTILITIES ARE DEPICTED AT SUE "QUALITY LEVEL C" AND HAVE BEEN LOCATED FROM FIELD SURVEY AND RECORD INFORMATION PROVIDED. THE SURVEYOR MAKES NO GUARANTEE THAT THE UNDERGROUND UTILITIES SHOWN COMPRISE ALL SUCH UTILITIES IN THE AREA, EITHER IN SERVICE OR ABANDONED. THE SURVEYOR FURTHER DOES NOT WARRANT THAT THE UNDERGROUND UTILITIES SHOWN AT QUALITY LEVEL C ARE IN THE EXACT LOCATION INDICATED. ALTHOUGH THEY ARE LOCATED AS ACCURATELY AS POSSIBLE FROM RECORD INFORMATION AVAILABLE, THE SURVEYOR HAS NOT PHYSICALLY LOCATED THE UNDERGROUND UTILITIES.

THE FOLLOWING UTILITY COMPANIES WERE REQUESTED TO PROVIDE THE SURVEYOR THE LOCATION OF THEIR UNDERGROUND FACILITIES THIN THE LIMITS OF THIS SURVEY.

UTILITY COMPANY / AGENCY	FACILITY	RESPONDED	AFFECTED
BCE NEXXIA CORPORATION	FIBER, TELEPHONE	NO	
BUFFALO SEWER AUTHORITY	SEWER	YES	YES
CENTURYLINK	FIBER, TELEPHONE	YES	NO
CITY OF BUFFALO	TRAFFIC SIGNAL & PHONE	YES	YES
CITY OF BUFFALO WATER AUTHORITY	WATER	YES	YES
DOT REGION 5 BUFFALO	TRAFFIC	YES	-
FIBERTECH NETWORKS NY	FIBER	NO	
G4S NITTEC WEST	FIBER	YES	NO
G4S SECURE INTEGRATION LLC	FIBER	YES	NO
LEVEL 3 COMMUNICATIONS	FIBER	NO	
LIGHTOWER FIBER TECHNOLOGIES	FIBER	YES	-
MCI	FIBER	NO	
NATIONAL FUEL GAS BUFFALO	GAS	YES	YES
NATIONAL GRID/WEST/ELECTRIC	ELECTRIC	YES	YES
NYS THRUWAY AUTHORITY BUFFALO	TRAFFIC & UTILITIES	YES	NO
OFFICE OF COURT ADMINISTRATION NY	FIBER	YES	YES
SPRINT NEXTEL	FIBER	NO	
TIME WARNER CABLE - BUFFALO	FIBER AND CABLE	YES	YES
VERIZON BUFFALO	FIBER AND PHONE	YES	-



VICINITY MAP:

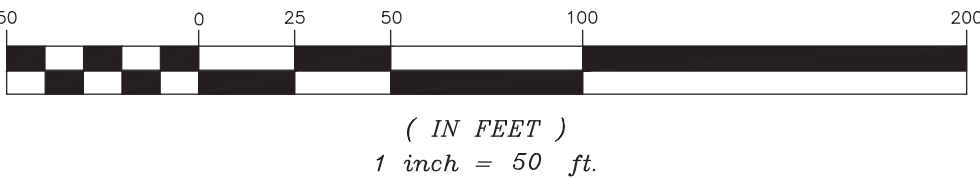
NOT TO SCALE

LEGEND

EDGE OF PAVEMENT	POOL	PILE
GUARDRAIL	BUILDING UC	GOLF FAIRWAY
TREELINE	FOUNDATION	UNDER CONSTRUCTION
FENCE GATE	RUINS	RUNWAY
RIVER	MARSH OUTLINE	AIRFIELD PAVED
HEDGE	POND, LAKE	AIRFIELD SHLDR
DIRTROAD	PAVED GUTTER	AIRFIELD PAINT
BUILDING (RES.)	HEADWALL	HELICOPTER PAD
MISCLINE	DAM	ABANDONED RR
RETAINING WALL	PIPE END	PAVED PARKING
CURB	CEMETERY	UNPAVED PARKING
INDEX	RECREATION UNPAV	AERIAL TC BOX
INTER	TANK	PIPE
INDEXD	RECREATION PAVED	AIR VENT
INTERD	TRAIL	HEAT PUMP / AC
SIDEWALK	BUILDING (MISC)	VALVE
DECK	CREEK	LANDSCAPE
STEPS	SOFTBREAK	END EXP JOINT
GRID (w/text)	HARDBREAK	ROAD CENTERLINE
RR	OBSCURED AREA	UTILITY BOX
SIGN/OH SIGN	UNPAVED SHOULDER	GREENS
ROAD PAINT	BUILDINGS (TEMP)	TRAPS_BUNKERS
PKG PAINT	CANOPY	TEES
TRAVELWAY	FENCE GATE	INDEFINITE AREA
PAVED DRIVE	PHONE	CULTIVATED FIELD
UNPAVED DRIVE	GUY	DOCK
BRUSH	RAMP	BRIDGE ROAD
CONTEXT	SMOKE	BRIDGE CURB
BRIDGE	OH PIPE	BRIDGE SIDEWALK
MAPPING LIMITS	OH WALK	MID EXP JOINT
SLAB CONCRETE	CONVEYOR	BRIDGE-BREAK
WALL	LANDFILL	OBSCURED BREAK
	OPEN STORAGE	

SYMBOLS		HANDI-CAP
□ CB	ROUND	• VALVE
□ SQUARE	○ CB	• FLAG
◇ DI	⇨ PWRPOLE	■ UNOB
⊙ DECIDUOUS BUSH	⇩ FIREHYD	□ RAILSIG
* CONIFEROUS BUSH	⇨ SWAMP	△ RAILSW
• TC	⇨ PWRPOLEL	□ TRABOX
• MH	⊠ TOWER (LINE)	• RUNLIGHT
• LAMPOST	⌒ CULV (LINE)	• TAXLIGHT
• DECIDUOUS TREE	⊕ CEMETERY	• TRASIG
* CONIFEROUS TREE	• AC or HEAT PUMP	• TREEBOLE
• SIGN	• POLES (MISC)	• MB
• POST	× DTM SPOT	• VERT
• SAT.DISH	× OBS DTM SPOT	• HOR
× SPOT	• ANTENNA	• HV
	• SAT.DISH	
	— GUY (LINE)	

GRAPHIC SCALE



SWBR

387 East Main Street Rochester NY 14604
585 232 8300 | rochester@swbr.com

FoitAlbert
ASSOCIATES
Architecture, Engineering, Surveying, Environmental.
245 Main Street, Suite 200
Buffalo, NY 14203
P: (716) 856-9891
www.foit-albert.com



Drawn By: SS
Checked By: MP
Project Manager: M. POHL

These documents and all the ideas, arrangements, designs and plans indicated thereon or presented thereby are owned by and remain the property of SWBR and no part thereof shall be utilized by any person, firm, or corporation for any purpose whatsoever except with the specific written permission of SWBR. All rights reserved. ©

Revisions

City of Buffalo Parks & Buffalo
Public School Facilities Survey &
Design Development
SWBR Project Number 18630.00

Community Foundation for
Greater Buffalo
726 Exchange Street, Suite 525
Buffalo, NY 14210

L-003

Waterfront

Existing
Conditions/Survey (East)

03.29.2019
Design Development Set

1 WATERFRONT DEMOLITION PLAN
1" = 80'-0"

SITE DEMOLITION NOTES	
NO.	DESCRIPTION
1	REMOVE AND DISPOSE OF CHAIN LINK BACKSTOP, ALL POSTS INCLUDING FOOTERS
2	REMOVE AND DISPOSE OF EXISTING GOAL POSTS
3	REMOVE EXISTING ASPHALT PAVED COURT INCLUDING CHAIN LINK FENCE, POSTS, FOOTERS, AND ANY ASSOCIATED EQUIPMENT (i.e. TENNIS NET POSTS), BASKETBALL HOOP TO BE SALVAGED AND PROTECTED FOR FUTURE USE ON SITE. CLEAR AND GRUB ALL VEGETATION UNDER AND GROWING THROUGH THE FENCING AND/OR PAVEMENTS.
4	PROTECT TREES TO REMAIN (TYP.)
5	SALVAGE BLEACHERS FOR FUTURE REUSE ON SITE
6	REMOVE AND SALVAGE EXISTING LIGHT POLE AND FIXTURE
7	REMOVE ALL MISC. CONCRETE SLABS, LIGHT POLE BASES, ELECTRIC PANEL BOXES, METAL BENCHES, TABLES, ETC.
8	REMOVE ALL GREEN ASH, NORWAY MAPLE, & KWANZAN CHERRY TREES. LANDSCAPE ARCHITECT TO TAG ANY TREES TO REMAIN, (i.e. SUGAR MAPLE, AUSTRIAN PINE, OAK, ETC.)
9	REMOVE GOALS AND SALVAGE FOR REUSE
10	EXISTING CIRCULAR WALL TO REMAIN. RAMP WALL TO REMAIN
11	DEMOLISH AND DISPOSE OF ALL PAVEMENT WALLS, RAILINGS, FOUNTAIN, & STEPS. SALVAGE PICNIC BENCHES FOR REUSE.
12	SAW CUT ASPHALT PAVEMENT. REMOVE AND DISPOSE OFF SITE.

GENERAL DEMOLITION NOTES

1. CONTRACTOR TO REMOVE & DISPOSE OF ALL ITEMS INDICATED & ANY ITEMS INCIDENTAL TO THE CONSTRUCTION AS REQUIRED.
2. CONTRACTOR TO PROTECT/PRESERVE ALL EXISTING ITEMS TO REMAIN, INCLUDING BUT NOT LIMITED TO BUILDINGS, PAVEMENT, OVERHEAD & BURIED UTILITIES, TREES, LANDSCAPE, ETC. DAMAGE TO ITEMS SCHEDULED TO REMAIN SHALL BE REPAIRED OR REPLANTED AT NO ADDITIONAL COST TO THE OWNER.
3. UTILITIES SHOWN ARE APPROXIMATE. CONTRACTOR SHALL HAVE ALL UNDERGROUND FACILITIES LOCATED AND MARKED PRIOR TO EXCAVATION/DEMOLITION CONSTRUCTION.
4. REMOVE CONCRETE SIDEWALK AND/OR PAVEMENT TO THE LIMITES INDICATED. SAW CUT CONCRETE TO THE NEAREST EXISTING CONTROL/EXPANSION JOINT.
5. CONTRACTOR SHALL MARK TREES (DESIGNATED FOR REMOVAL) IN THE FIELD AND OBTAIN OWNER'S ON-SITE REPRESENTATIVE APPROVAL PRIOR TO BEGINNING REMOVALS.
6. CLEAR AND GRUB ALL VOLUNTEER VEGETATION, AS INDICATED.
7. ALL EXISTING SITE FURNITURE TO BE REMOVED AND DISPOSED OF UNLESS OTHERWISE NOTED.

DEMOLITION LEGEND

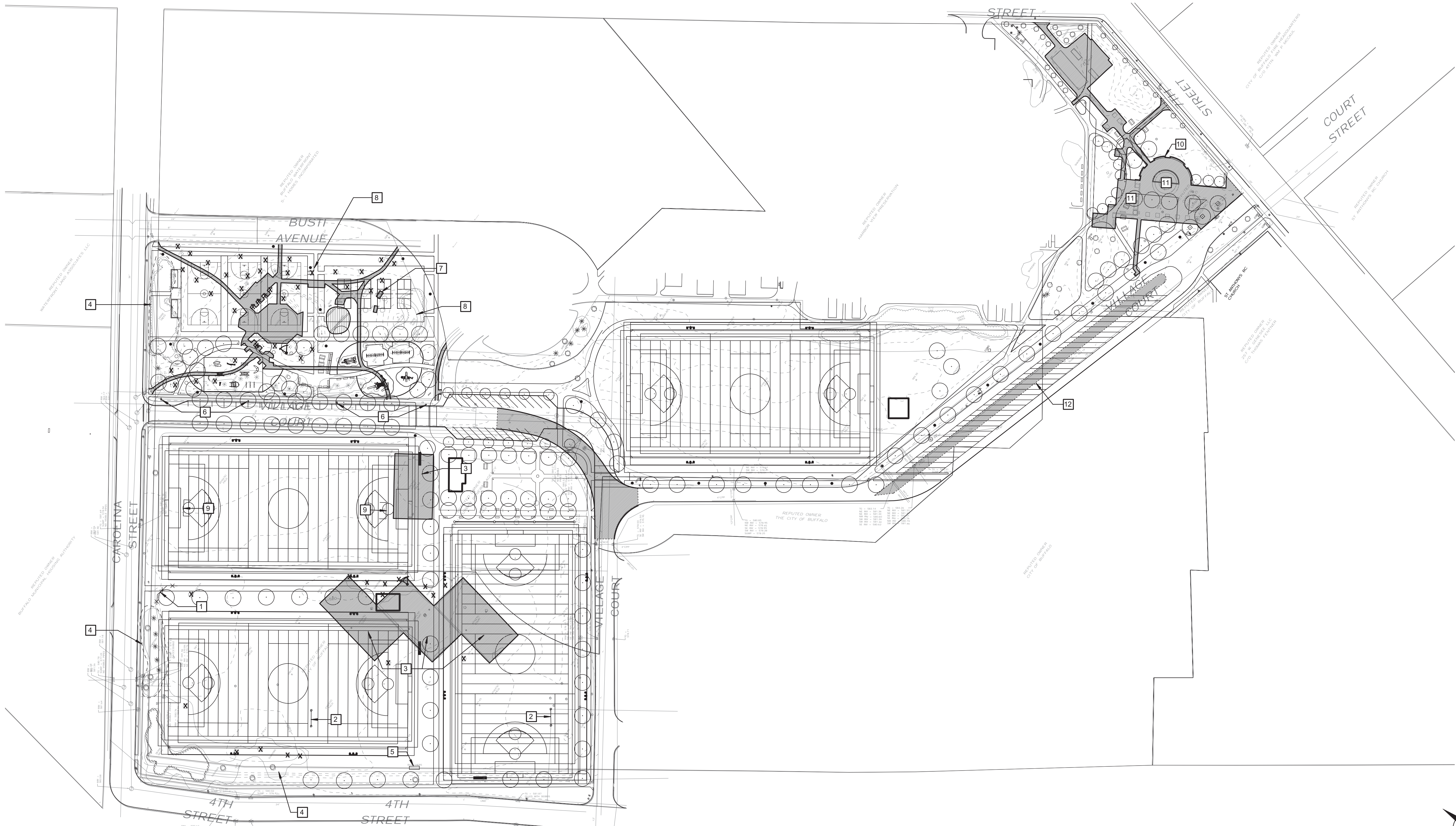
- EXISTING PAVEMENT, CURBING, AND AGGREGATE BASE MATERIAL TO BE REMOVED AND DISPOSED OFF SITE.
- EXISTING PLAYGROUND EQUIPMENT, SAFETY SURFACE MATERIAL (EWF), AND FOOTINGS TO BE REMOVED AND DISPOSED OFF SITE.
- ×

×
- SITE ELEMENT TO BE REMOVED AND DISPOSED OFF SITE IN A LEGAL MATTER.

.....

SAW CUT LINETREE TO REMAIN AND BE PROTECTED

✕

TREE TO BE REMOVED

SWBR

387 East Main Street Rochester NY 14604
585 232 8300 | rochester@swbr.com

Drawn By: MMF
Checked By: BP
Project Manager: BP

These documents and all the ideas, arrangements, designs and plans indicated thereon or presented thereby are owned by and remain the property of SWBR and no part thereof shall be utilized by any person, firm, or corporation for any purpose whatsoever except with the specific written permission of SWBR. All rights reserved. ©

Revisions

City of Buffalo Parks & Buffalo
Public School Facilities Survey &
Design Development
SWBR Project Number 18630.00

Community Foundation for
Greater Buffalo
726 Exchange Street, Suite 525
Buffalo, NY 14210

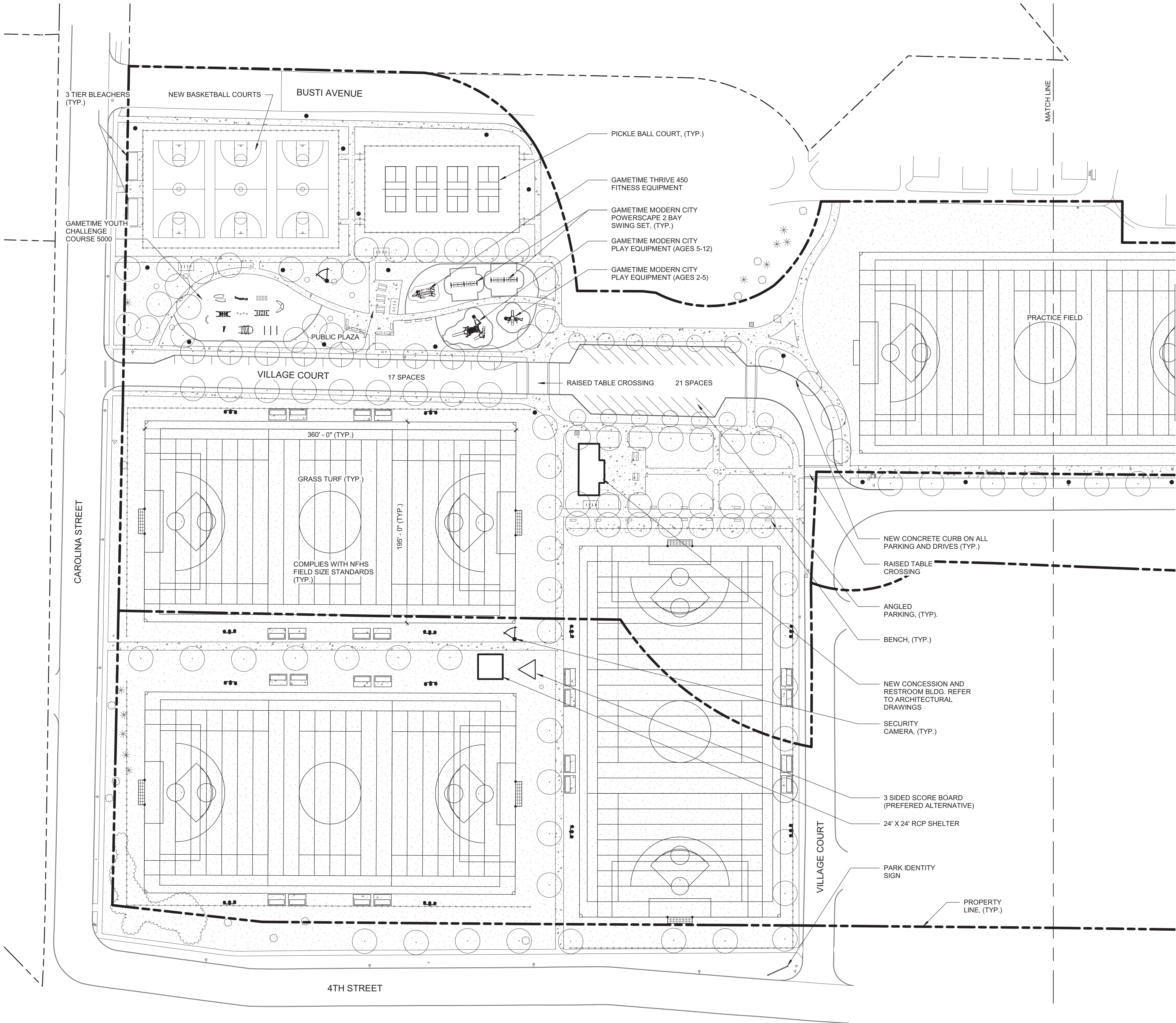
L-004

Waterfront

Demolition Plan

03.29.2019
Design Development Set

1 WATERFRONT SITE LAYOUT PLAN (WEST)
1" = 50'-0"



LANDSCAPE AND PAVING LEGEND

- PROPERTY LINES
- CONCRETE
- LAWN (TOPSOIL AND SEED)
- STONE DUST WALKING SURFACE
- SYNTHETIC TURF ATHLETIC FIELD
- NEW SOD TO REESTABLISH FIELD EDGE (BASEBALL/SOFTBALL)
- PROPOSED PLANT BED
- ASPHALT WALKWAY
- EXISTING TREE TO REMAIN
- PROPOSED TREE
- FENCE
- FIELD LIGHTING
- PATHWAY LIGHTING
- LAMPPOLE TO REMAIN
- SECURITY CAMERA
- SCOREBOARD
- COMBINATION FOOTBALL / SOCCER GOAL
- BIKE RACK
- DOG WASTE STATION
- 6' METAL BENCH

MULTIPURPOSE FIELD CONSTRUCTION NOTES

1. STRIP EXISTING TURF (FRAISE MOW)
2. DISK OR TILL 4" DEEP (MIN)
3. ADD IMPORTED SOIL AND ROUGH GRADE TO ACHIEVE DESIGN GRADES
4. CONSTRUCT ALL SITE APPURTENANCES
 - A. DRAINAGE
 - B. LIGHTING
 - C. GOAL POSTS
 - D. CONCRETE PADS
 - E. SCORE BOARDS
5. FINE GRADE, RAKE AND SEED
6. PERFORM GROW IN MOWINGS AND FERTILIZATION



387 East Main Street Rochester NY 14604
585 232 8300 | rochester@swbr.com

Drawn By: MMF
Checked By: BP
Project Manager: BP

These documents and all the ideas, arrangements, designs and plans indicated thereon or presented thereby are owned by and remain the property of SWBR and no part thereof shall be utilized by any person, firm, or corporation for any purpose whatsoever except with the specific written permission of SWBR. All rights reserved. ©

Revisions

City of Buffalo Parks & Buffalo
Public School Facilities Survey &
Design Development
SWBR Project Number 18630.00

Community Foundation for
Greater Buffalo
726 Exchange Street, Suite 525
Buffalo, NY 14210

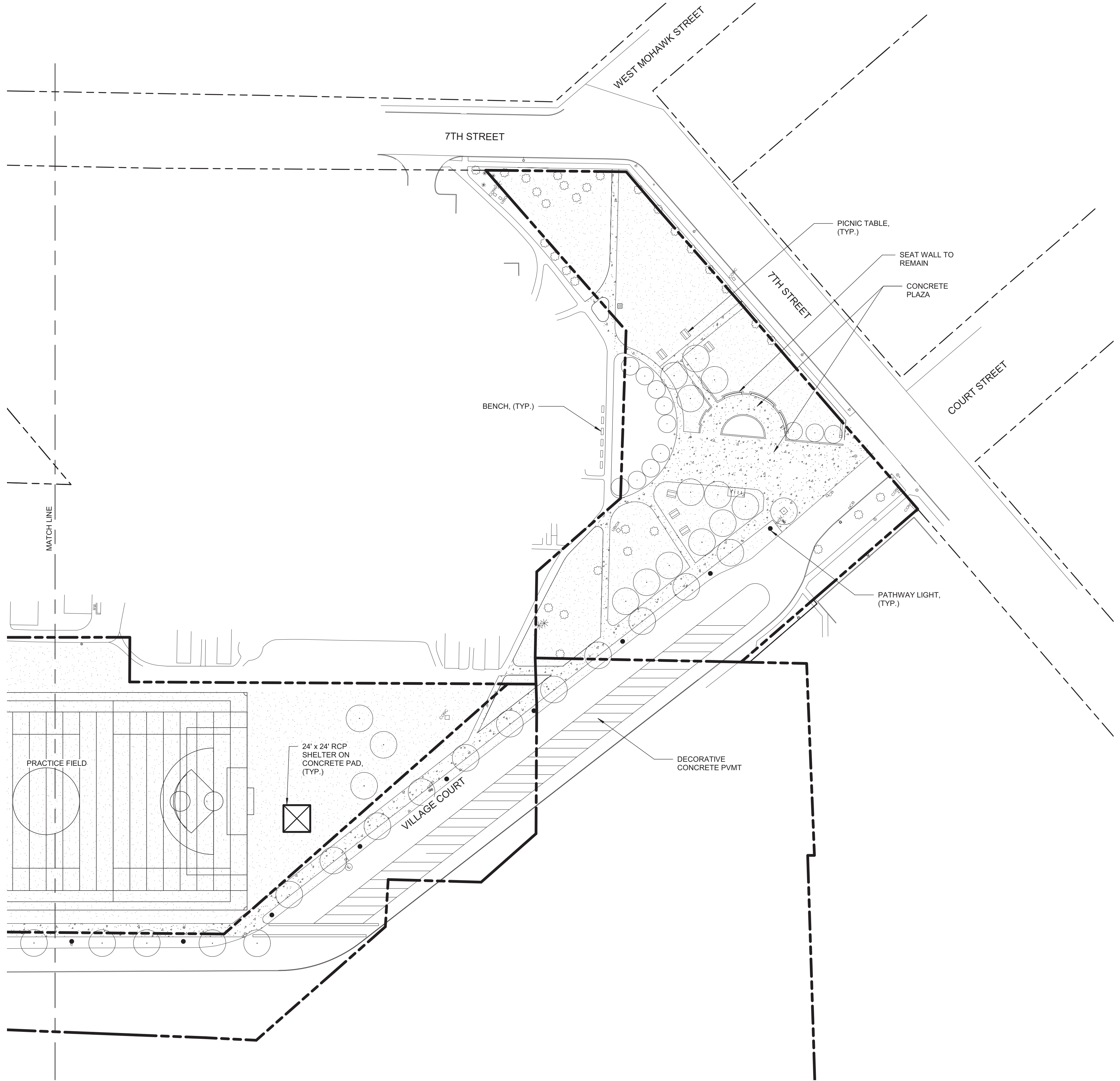
L-101
Waterfront
Site Layout Plan (West)

03.29.2019
Design Development Set

1

WATERFRONT SITE LAYOUT PLAN (EAST)

1" = 50'-0"



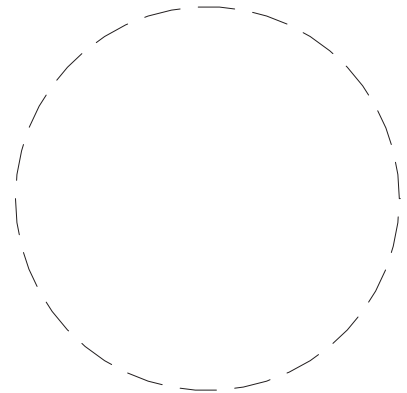
LANDSCAPE AND PAVING LEGEND

- PROPERTY LINES
- CONCRETE
- LAWN (TOPSOIL AND SEED)
- STONE DUST WALKING SURFACE
- SYNTHETIC TURF ATHLETIC FIELD
- NEW SOD TO REESTABLISH FIELD EDGE (BASEBALL/SOFTBALL)
- PROPOSED PLANT BED
- ASPHALT WALKWAY
- EXISTING TREE TO REMAIN
- PROPOSED TREE
- FENCE
- FIELD LIGHTING
- PATHWAY LIGHTING
- LAMPPOLE TO REMAIN
- SECURITY CAMERA
- SCOREBOARD
- COMBINATION FOOTBALL / SOCCER GOAL
- BIKE RACK
- DOG WASTE STATION
- 6' METAL BENCH



SWBR

387 East Main Street Rochester NY 14604
585 232 8300 | rochester@swbr.com



Drawn By: MMF
Checked By: BP
Project Manager: BP

These documents and all the ideas, arrangements, designs and plans indicated thereon or presented thereby are owned by and remain the property of SWBR and no part thereof shall be utilized by any person, firm, or corporation for any purpose whatsoever except with the specific written permission of SWBR. All rights reserved. ©

Revisions

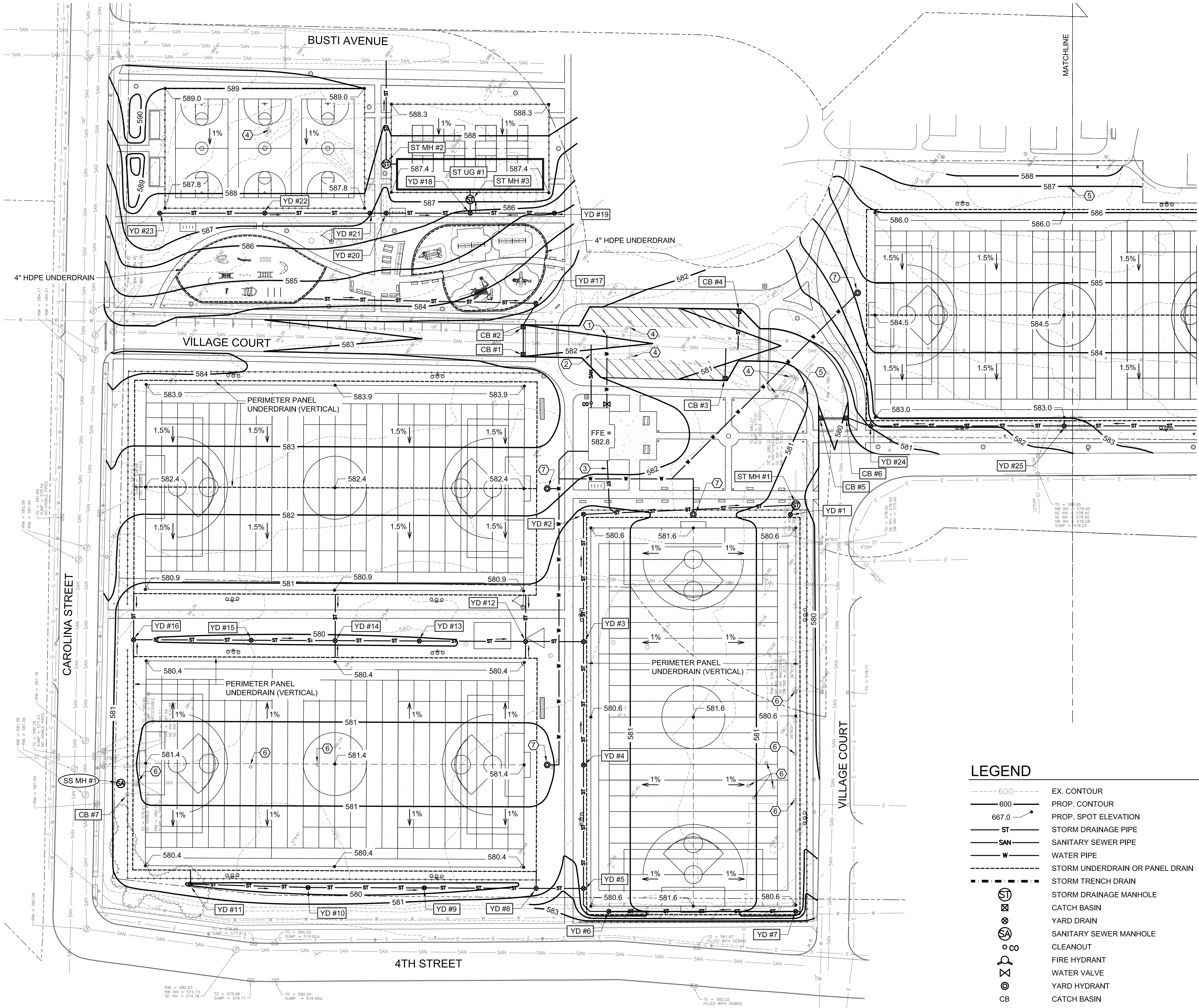
City of Buffalo Parks & Buffalo
Public School Facilities Survey &
Design Development
SWBR Project Number 18630.00

Community Foundation for
Greater Buffalo
726 Exchange Street, Suite 525
Buffalo, NY 14210

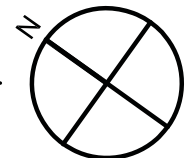
L-102
Waterfront

Site Layout Plan (East)

03.29.2019
Design Development Set



GRADING, DRAINAGE & UTILITY PLAN
SCALE: 1" = 50'



GRADING & UTILITY NOTES

1. STORM PIPING TO BE HDPE UNLESS OTHERWISE INDICATED. SANITARY SEWER PIPING TO BE SDR-35 PVC. WATER PIPING TO BE TYPE K COPPER OR DUCTILE IRON. PIPE SIZING TO BE DETERMINED DURING FINAL DESIGN.
2. ALL UNDERDRAIN PIPING TO BE 4" DIAMETER PERFORATED HDPE OR PANEL UNDERDRAIN AS INDICATED ON PLANS. UNDERDRAIN AND PANEL DRAIN PIPE TO SLOPE TOWARD CONNECTIONS TO STORM SYSTEM.
3. THE PROJECT IS SUBJECT TO THE REQUIREMENTS OF NYSDEC SPDES GENERAL PERMIT FOR STORMWATER DISCHARGES FROM CONSTRUCTION ACTIVITY, GP-0-15-002. A STORMWATER POLLUTION PREVENTION PLAN (SWPPP) IS REQUIRED FOR THE PROJECT AS WELL AS EROSION AND SEDIMENT CONTROL PLANS PREPARED IN ACCORDANCE WITH THE "NEW YORK STATE STANDARDS AND SPECIFICATIONS FOR EROSION AND SEDIMENT CONTROL."
4. UNDERGROUND DETENTION LOCATION AND SIZE IS SCHEMATIC ONLY. STORMWATER MANAGEMENT SYSTEM (WATER QUANTITY AND QUALITY MEASURES) TO BE DESIGNED TO MEET SWPPP REQUIREMENTS DURING FINAL DESIGN.

UTILITY KEY NOTES

①	NEW WATER SERVICE LATERAL TO CONNECT TO EX. 18" WATER MAIN
②	NEW SANITARY SEWER LATERAL TO CONNECT TO EX. SEWER MAIN
③	NEW ROOF DRAINAGE STORM LATERAL TO CONNECT FROM BUILDING TO TO NEW STORM MAIN
④	REMOVE EX. CATCH BASIN
⑤	ADJUST EX. MANHOLE RIM TO FINISH GRADE
⑥	ADJUST EX. MANHOLE RIM TO 3' BELOW FINISH GRADE
⑦	NEW YARD HYDRANT TO CONNECT TO BUILDING WATER

STORM DRAINAGE STRUCTURES

I.D.	DESCRIPTION	RIM	INVERT
ST MH #1	DOGHOUSE STORM MH	580.5	572.2
ST MH #2	STORM MANHOLE	587.1	580.5
ST MH #3	STORM MANHOLE	587.3	580.5
CB #1	CATCH BASIN	582.0	578.0
CB #2	CATCH BASIN	582.0	578.0
CB #3	CATCH BASIN	580.6	576.6
CB #4	CATCH BASIN	580.6	576.6
CB #5	CATCH BASIN	579.9	575.9
CB #6	CATCH BASIN	579.9	575.9
CB #7	CATCH BASIN	ADJUST TO FG	-----
YD #1	YARD DRAIN	580.4	576.9
YD #2	YARD DRAIN	580.4	573.2
YD #3	YARD DRAIN	580.4	573.8
YD #4	YARD DRAIN	580.4	574.4
YD #5	YARD DRAIN	580.4	575.0
YD #6	YARD DRAIN	580.4	575.4
YD #7	YARD DRAIN	580.4	576.9
YD #8	YARD DRAIN	580.1	575.2
YD #9	YARD DRAIN	579.4	575.7
YD #10	YARD DRAIN	579.4	576.3
YD #11	YARD DRAIN	579.9	576.9
YD #12	YARD DRAIN	580.1	574.2
YD #13	YARD DRAIN	579.6	574.8
YD #14	YARD DRAIN	579.2	575.3
YD #15	YARD DRAIN	579.6	575.9
YD #16	YARD DRAIN	580.1	576.6
YD #17	YARD DRAIN	583.0	578.5
YD #18	YARD DRAIN	585.9	580.7
YD #19	YARD DRAIN	585.0	581.5
YD #20	YARD DRAIN	586.5	581.8
YD #21	YARD DRAIN	587.0	582.1
YD #22	YARD DRAIN	587.6	583.1
YD #23	YARD DRAIN	587.6	584.1
YD #24	YARD DRAIN	581.0	576.2
YD #25	YARD DRAIN	582.7	578.0
ST UG #1	STORM UNDERGROUND DETENTION SYSTEM	VARIES	580.5

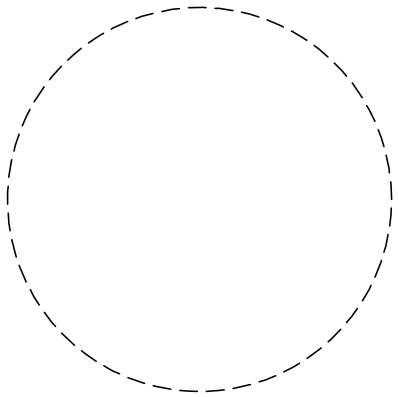
SANITARY SEWER STRUCTURES

I.D.	DESCRIPTION	RIM	INVERT
SS MH #1	DOGHOUSE SEWER MH	580.9	TBD

SWBR

387 East Main Street Rochester NY 14604
585 232 8300 | rochester@swbr.com

FoitAlbert
ASSOCIATES
Architecture. Engineering. Surveying. Environmental.
380 New Street, Suite 200
Buffalo, NY 14203 P: 716 856-3933 www.foit-albert.com



Drawn By: HC
Checked By: DLP
Project Manager: DLP

These documents and all the ideas, arrangements, designs and plans indicated thereon or presented thereby are owned by and remain the property of SWBR and no part thereof shall be utilized by any person, firm, or corporation for any purpose whatsoever except with the specific written permission of SWBR. All rights reserved. ©

Revisions

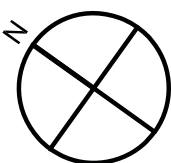
City of Buffalo Parks & Buffalo
Public School Facilities Survey &
Design Development
SWBR Project Number 18630.00

Community Foundation for
Greater Buffalo
726 Exchange Street, Suite 525
Buffalo, NY 14210

C-101
Waterfront

Grading, Drainage &
Utility Plan (West)

03.29.2019
Design Development Set



1. STORM PIPING TO BE HDPE UNLESS OTHERWISE INDICATED. SANITARY SEWER PIPING TO BE SDR-35 PVC. WATER PIPING TO BE TYPE K COPPER OR DUCTILE IRON. PIPE SIZING TO BE DETERMINED DURING FINAL DESIGN.
2. ALL UNDERDRAIN PIPING TO BE 4" DIAMETER PERFORATED HDPE OR PANEL UNDERDRAIN AS INDICATED ON PLANS. UNDERDRAIN AND PANEL DRAIN PIPE TO SLOPE TOWARD CONNECTIONS TO STORM SYSTEM.
3. THE PROJECT IS SUBJECT TO THE REQUIREMENTS OF NYSDEC SPDES GENERAL PERMIT FOR STORMWATER DISCHARGES FROM CONSTRUCTION ACTIVITY, GP-0-15-002. A STORMWATER POLLUTION PREVENTION PLAN (SWPPP) IS REQUIRED FOR THE PROJECT AS WELL AS EROSION AND SEDIMENT CONTROL PLANS PREPARED IN ACCORDANCE WITH THE "NEW YORK STATE STANDARDS AND SPECIFICATIONS FOR EROSION AND SEDIMENT CONTROL."
4. UNDERGROUND DETENTION LOCATION AND SIZE IS SCHEMATIC ONLY. STORMWATER MANAGEMENT SYSTEM (WATER QUANTITY AND QUALITY MEASURES) TO BE DESIGNED TO MEET SWPPP REQUIREMENTS DURING FINAL DESIGN.

4	REMOVE EX. CATCH BASIN
5	ADJUST EX. MANHOLE RIM TO FINISH GRADE

I.D.	DESCRIPTION	RIM	INVERT
YD #26	YARD DRAIN	583.2	579.7

	EX. CONTOUR
	PROP. CONTOUR
	PROP. SPOT ELEVATION
	STORM DRAINAGE PIPE
	SANITARY SEWER PIPE
	WATER PIPE
	STORM UNDERDRAIN OR PANEL DRAIN
	STORM TRENCH DRAIN
	STORM DRAINAGE MANHOLE
	CATCH BASIN
	YARD DRAIN
	SANITARY SEWER MANHOLE
	CLEANOUT
	FIRE HYDRANT
	WATER VALVE
	YARD HYDRANT
CB	CATCH BASIN
YD	YARD DRAIN
ST MH	STORM DRAINAGE MANHOLE
SS MH	SANITARY SEWER MANHOLE
TS / BW	TOP OF WALL / BOTTOM OF WALL
TS / BS	TOP OF STAIR / BOTTOM OF STAIR

FoitAlbert
ASSOCIATES
Architecture. Engineering. Surveying. Environmental.
295 Main Street, Suite 200
Burlington, NY 14203
R. (716) 856-3933
www.foit-albert.com

Drawn By:	HC
Checked By:	DLP
Project Manager:	DLP

These documents and all materials, arrangements, designs and plans indicated thereon or presented thereby are owned by and remain the property of SWBR and no part thereof shall be utilized by any person, firm, or corporation for any purpose whatsoever except with the specific written permission of SWBR. All rights reserved. ©

Revisions

City of Buffalo Parks & Buffalo
Public School Facilities Survey &
Design Development
SWBR Project Number 18630.00

**Community Foundation for
Greater Buffalo**
726 Exchange Street, Suite 525
Buffalo, NY 14210

C-102

Waterfront

Grading, Drainage & Utility Plan (East)

03.29.2019
Design Development Set

1 WATERFRONT SITE ELECTRICAL PLAN
1" = 50'-0"



LEGEND:

- FIELD LIGHTING
- PATHWAY LIGHTING
- LAMPPOLE TO REMAIN
- SECURITY CAMERA
- SCOREBOARD
- BRANCH CIRCUIT TO PANELBOARD. LETTERING INDICATES PANELBOARD DESIGNATIONS. QUANTITY OF ARROWHEADS INDICATE QUANTITY OF BRANCH CIRCUITS.

KEYED DRAWING NOTES: #

- PROVIDE 208V, 3 PHASE, 200 AMP PANEL 'H' TO BE USED FOR NEW FIELD LIGHTING.
- PROVIDE 208V, 3 PHASE, 40 AMP CIRCUIT CONSISTING OF (3)#6 AWG CONDUCTORS WITH (1) #10 EQUIPMENT GROUNDING CONDUCTOR IN 1" CONDUIT. EACH LAMP POLE SHALL BE PROVIDED (1) CIRCUIT.
- PROVIDE 2 POLE, 60 AMP NEMA 3R DISCONNECT SWITCH AND A CIRCUIT CONSISTING OF (2) #4 AWG CONDUCTORS WITH (1) #10 EQUIPMENT GROUNDING CONDUCTOR IN 1" CONDUIT TO PANEL 'H'.
- PROVIDE 2 POLE, 60 AMP NEMA 3R DISCONNECT SWITCH AND A CIRCUIT CONSISTING OF (2) #6 AWG CONDUCTORS WITH (1) #10 EQUIPMENT GROUNDING CONDUCTOR IN 1" CONDUIT TO EXISTING PANEL IN CONCESSION BUILDING.
- PROVIDE 120 VOLT, 1 PHASE, 20 AMP CIRCUIT TO PANEL H.
- PROVIDE (2) #6 AWG CONDUCTORS & (1) #12 EGC IN 3" CONDUIT LOOPE TO EACH PATHWAY LIGHTING FIXTURE. PROVIDE GROUNDED HANDHOLE EVERY 350 FEET TO SUIT FIELD CONDITIONS.

POLES	TOTAL WATTS	# LUMS	MH
P01	6921	9	70
P02	6921	9	70
P03	6921	9	70
P04	6921	9	70
P05	6921	9	70
P06	6921	9	70
P07	6921	9	70
P08	6921	9	70
P09	6921	9	70
P10	6921	9	70
P11	6921	9	70
P12	6921	9	70
P13	6921	9	70
P14	6921	9	70
P15	6921	9	70
P16	6921	9	70

SWBR

387 East Main Street Rochester NY 14604
585 232 8300 | rochester@swbr.com

WATTS
ARCHITECTURE &
ENGINEERING



Drawn By: MPC
Checked By: MJS
Project Manager: RCP

These documents and all the ideas, arrangements, designs and plans indicated thereon or presented thereby are owned by and remain the property of SWBR and no part thereof shall be utilized by any person, firm, or corporation for any purpose whatsoever except with the specific written permission of SWBR. All rights reserved. ©

Revisions

City of Buffalo Parks & Buffalo
Public School Facilities Survey &
Design Development
SWBR Project Number 18630.00

Community Foundation for
Greater Buffalo
726 Exchange Street, Suite 525
Buffalo, NY 14210

E-101
WATERFRONT
ELECTRICAL SITE
PLAN

3.29.2019
Design Development Set